



LINGONG HEAVY MACHINERY CO., LTD
Address: No. 2676, Kejia Road, Jinan, Shandong, China
Email: sales@lgmg.com.cn
Tel: +86 531 6787 9283
www.lgmglifts.com

Information of agent



Please contact LGMG or local dealer for more details.
LGMG reserves the right to change technical data without prior notice.
All photos and pictures in this brochure are for promotional purpose only. Some of the pictures are from customers. If you have any objection, please contact us in time.
This brochure comes into effect in May, 2024.

LGMG

TELEHANDLERS

H625 / H735 / HA735
H1440 / H1840 / HR2150



Contents



01-02

Contents

19-20

Load Charts

03-04

Group Profile

21-24

Specifications

05-06

LGMG Telehandler

25-26

Features

07-18

Product Highlights

26

Top Service

Group Profile

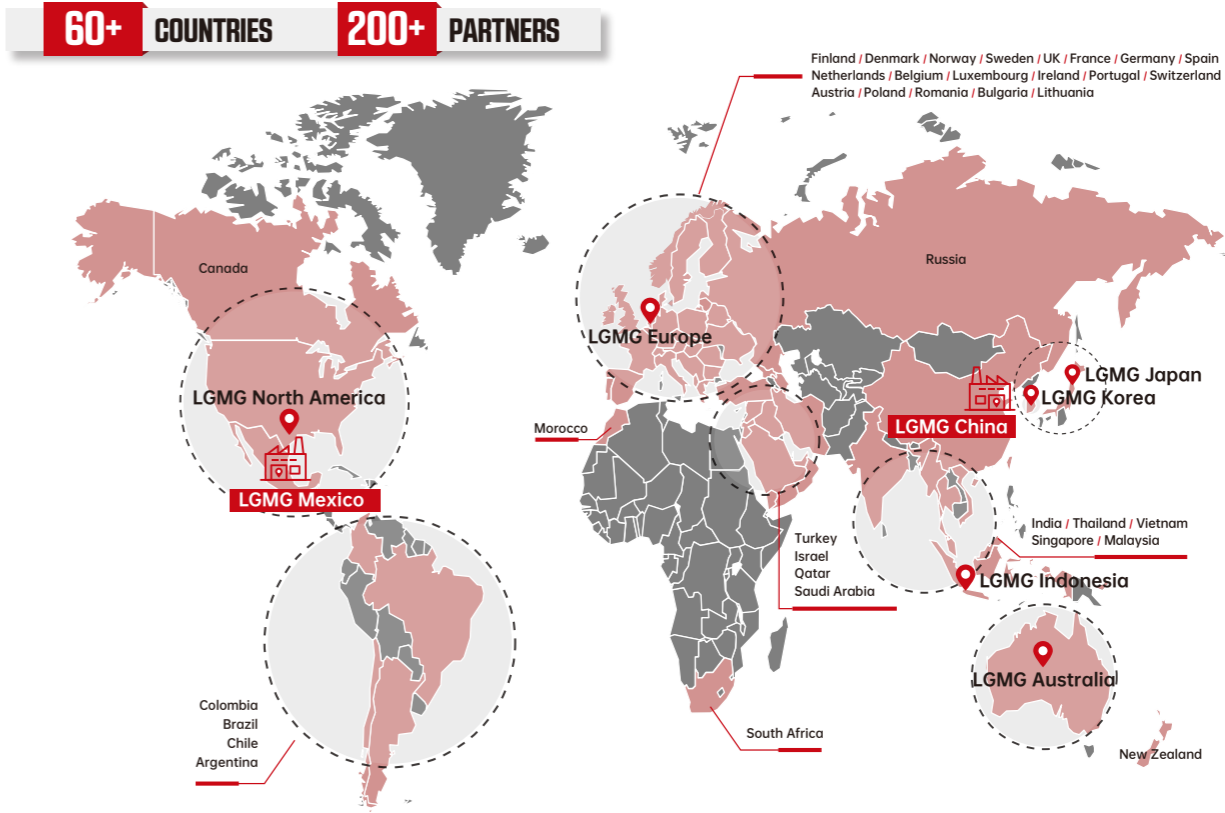
Founded in 1972, Lingong Group is recognized as one of the top 100 enterprises in China's construction machinery industry and one of the five leading groups in the sector. Lingong Group consists of three core companies: Shandong Lingong Construction Machinery Co., Ltd. (SDLG), Lingong Heavy Machinery Co., Ltd. (LGMG), and Lingong Special Machinery Co., Ltd. The group's business covers five sectors: construction machinery, mining machinery, aerial work platforms, special machinery, and components manufacturing.

Located in Jinan, Shandong Province, China, Lingong Heavy Machinery Co., Ltd. (LGMG) is a wholly-owned subsidiary of Lingong Group, with business sections covering aerial work platforms, telehandlers, and mining machinery, etc. LGMG has emerged as a significant player in China's construction machinery industry, ranking among the top 100 global construction machinery manufacturers, the top 30 in China, and the top 5 among Chinese manufacturers of aerial work platforms. LGMG has never stopped the pursuit of product excellence.

LGMG has established wholly-owned subsidiaries in Europe, North America, Australia, Japan, South Korea and Indonesia to provide better sales, service, and parts support for aerial work platforms and telehandlers to our customers.

In 2023, LGMG global manufacturing base in Mexico completed construction, and its official operation marks a significant milestone for LGMG in terms of overseas production.

Global Sales Network



- LOCAL TEAM SUPPORT
- LOCAL SPARE PARTS
- LOCAL TRAINING
- LOCAL SERVICE
- LOCAL MACHINE DELIVERY

LGMG Telehandler

LGMG telehandlers have become super versatile players in the loading and unloading field due to their unparalleled flexibility, efficiency, and multifunctionality. Whether in the fields such as construction, mining, port logistics, warehousing management or agricultural production, LGMG telehandlers can always meet your diverse handling needs, effectively improving work efficiency and reducing labor costs.

LGMG telehandler family has six models, including fixed telehandlers H625, H735, HA735, H1440, H1840, and rotating telehandler HR2150. It's worth mentioning that the HA735 telehandler is tailored for agricultural operations, demonstrating LGMG's deep understanding and professional commitment to specific application scenarios. Our telehandlers are designed with a lifting height ranging from 5.94m to 20.7m and a load range extending from 2500kg to 5000kg, meeting all the handling needs of various application scenarios.

The LGMG brand, with its profound manufacturing experience and relentless pursuit of high quality, ensures the excellent quality of its telehandlers. We strive for excellence not only in manufacturing and design but also in meeting the rigorous standards set by customers. Moreover, our global dealer network offers customers a comprehensive "one-stop" solution that comprises parts supply and professional services, improving operation efficiency.

Rotating Telehandler - HR2150
Max. Capacity: 4999kg
Max. Lifting Height: 20.7m

Fixed Telehandler - H1840
Max. Capacity: 4000kg
Max. Lifting Height: 17.6m

Fixed Telehandler - H1440
Max. Capacity: 4000kg
Max. Lifting Height: 13.6m

Agricultural Telehandler - HA735
Max. Capacity: 3500kg
Max. Lifting Height: 6.9m

Fixed Telehandler - H735
Max. Capacity: 3500kg
Max. Lifting Height: 7m

Fixed Telehandler - H625
Max. Capacity: 2500kg
Max. Lifting Height: 5.94m

 **Three in one**

 **All-rounder**

 **Perfect choice**



Product Highlights

Powerful and Efficient

LGMG telehandlers, equipped with a high-performance engine of a renowned brand, meet Euro V and T4F standards, leading the industry's new standards with powerful driving force and excellent fuel efficiency. They have strong power while minimizing environmental impact, achieving green operations that are economical and environmental-friendly.



Euro III engine



Euro V engine

Safe and Productive

The boom is made of high-strength steel plates, combined with medium-sized butt welding technology to reduce welding points and enhance the strength and toughness of the boom. It can lift heavy objects weighing up to 2500-4999kg, demonstrating extraordinary carrying capacity.



Product Highlights

Smooth Transmission

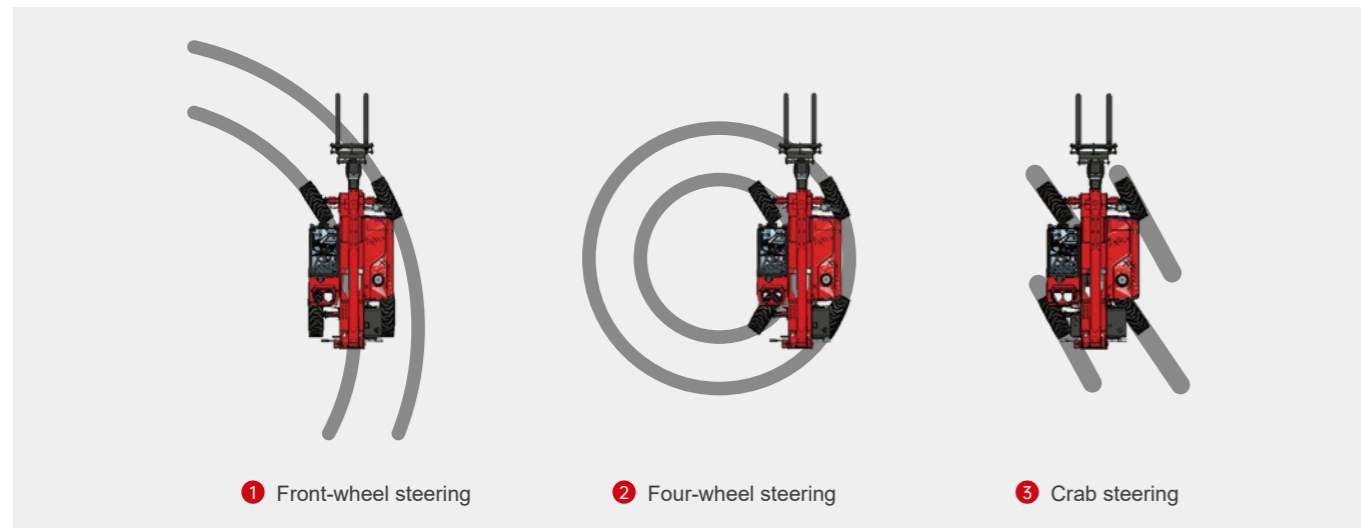
LGMG telehandlers are equipped with hydrostatic transmission or torque converter power shift transmission, meeting different operational needs.

The hydrostatic transmission system provides comfortable operation and rapid response, while the torque converter power shift transmission system offers stronger low-speed traction and improves rough terrain capabilities on harsh road.



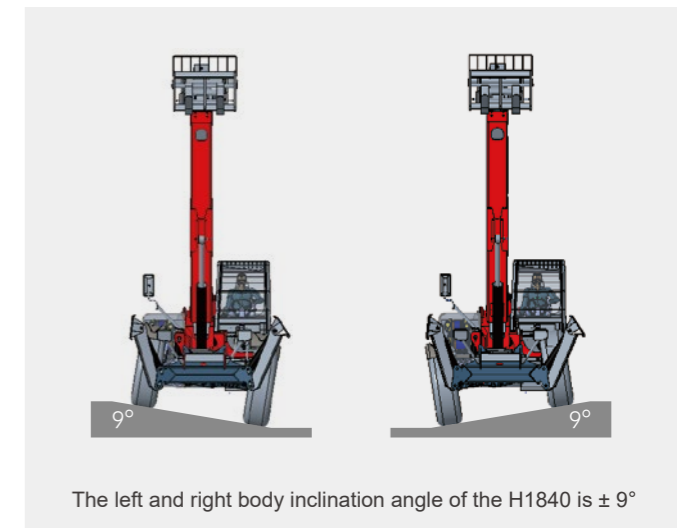
Flexible Steering

LGMG telehandlers have three steering modes: front-wheel steering¹, four-wheel steering², and crab steering³, allowing flexible operation in confined spaces. Emergency steering function ensure safe and worry free operation.



Robust and Reliable

Leveling frame allows the wheels to grip the ground when driving on uneven terrain, improving RT performance and operation adaptability. With stability and reliability, LGMG telehandlers can challenge any tough terrain with ease.



Product Highlights

Comfortable and Ergonomic

The ROPS & FOPS level II cab can provide high roll-over protection and keep the driver's safety at all times. The cab design prioritizes the driver's comfort control, featuring ergonomic button and joystick controls. The standard high-capacity air conditioning system with heater, creates a comfortable and productive operator environment. The cab can also provide excellent all-round visibility thanks to direct glazing, large roof screen, low engine house, and other features like reverse camera and rearview mirror.

- A ROPS & FOPS level II cab
- B Adjustable seats
- C Reversing camera
- D Multi-angle rearview mirror



A



B



C



D

Universal Components

The highly interchangeable components such as the boom and electronic control joystick reduce the total cost of ownership, improving the economic benefits for customers.

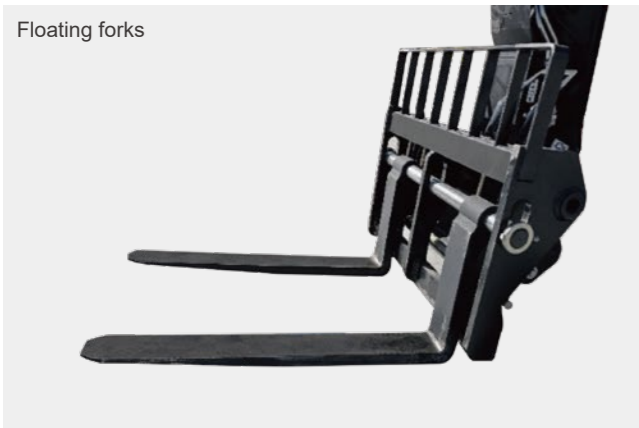


Product Highlights

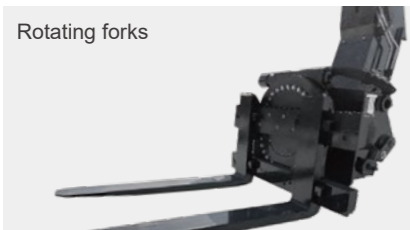
Versatile and Adaptable

It is equipped with a universal attachment quick-change interface and optional hydraulic release function, allowing rapid switching various attachments such as platforms, buckets, frame-mounted hooks, and manipulators to meet diverse operational needs.

Floating forks



Rotating forks



Bucket



Frame mounted hook



Extension jib



Extension work platform



Universal attachments interface



Multiple Tires Available

Depending on the working environment, pneumatic tyre or filling type solid tyre can be selected to provide the optimal choice for different road conditions.



Pneumatic tires greatly reduces noise, provides better anti-slip performance, and is easy to maintain.



Filling type solid tires has greater durability, is explosion-proof, and has a strong load-bearing capacity.

Agricultural Telehandler HA735

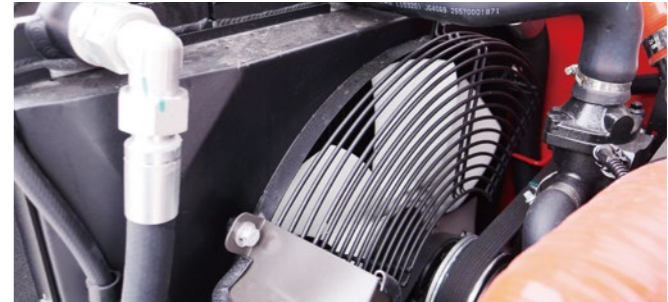


HA735 is specially tailored for agricultural use while retaining the excellent performance for construction needs. Equipped with a Yuchai 3.6L engine delivering the power of 73kw, the HA735 boasts high reliability, robust power, and low fuel consumption, making it the ideal choice for agricultural applications.

- Considering agricultural working conditions, the discharge angle of the bucket has been increased to facilitate the shoveling and unloading of viscous materials for users.
- The wider and larger wheel and tire design enhance the stability of the entire machine.
- The brake pedal integrates a power cut-off function, allowing the operator to flexibly turn it on or off according to operational needs, reducing maintenance costs, delivering greater power, and improving operational efficiency.



- The engine case boasts an innovative structural design, which not only ensures adequate heat dissipation and air intake but also effectively prevents potential malfunctions caused by debris clogging the radiator, ultimately guaranteeing the engine's stable operation and long-term durability.



- The engine-integrated fan features a manual/automatic blowback function, enabling timely removal of debris attached to the air intake.

Rotating Telehandler *HR2150*

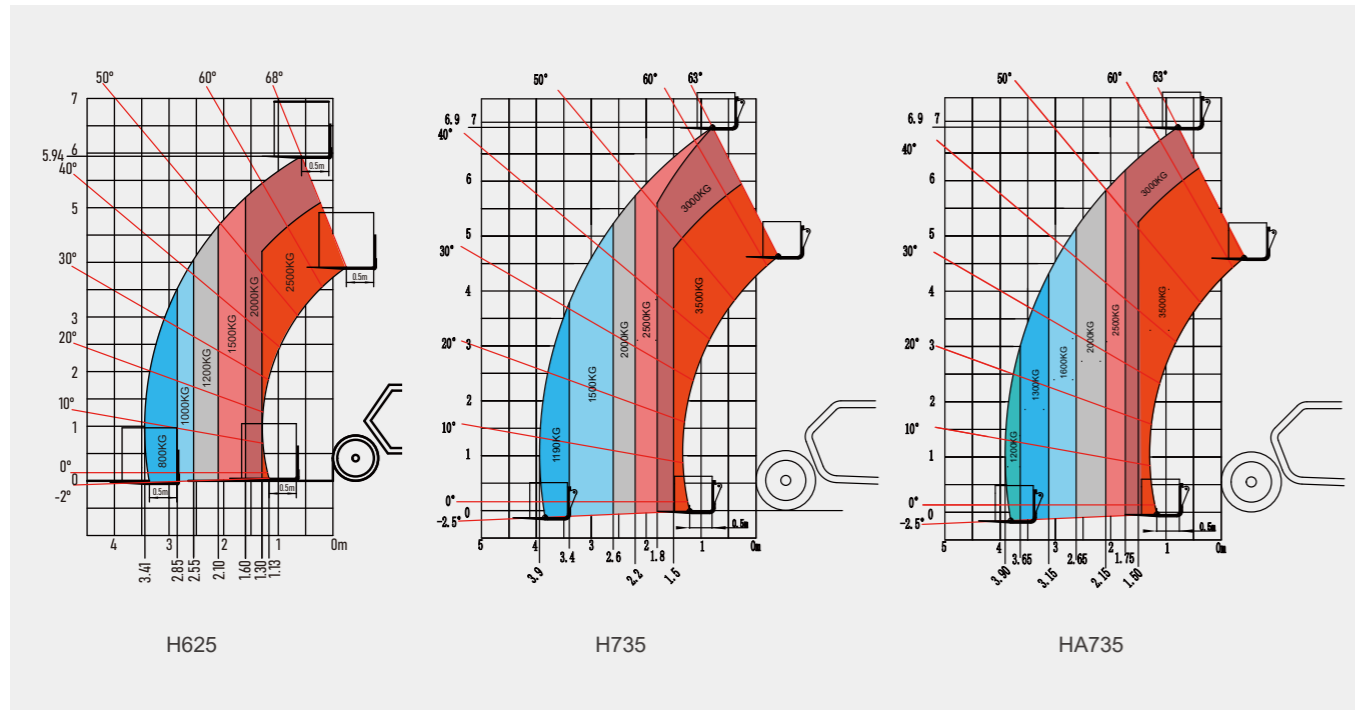
The HR2150 seamlessly integrates excellent performance with all-terrain adaptability. With an ingenious design, it integrates the functions of telehandlers, cranes, and aerial work platforms, earning it the title of a multi-functional tool among engineering equipment. This equipment provides unparalleled operational efficiency with its unique flexibility and wide visibility.

- Its intelligent control system design ensures convenient and safe operation, making each job easy and effortless. The combination of diversified steering modes and hydrostatic transmission technology guarantees superior maneuverability across various working environments.
- The HR2150 adopts an innovative 360-degree omnidirectional cab design, allowing for all round construction work with a fixed chassis. It is especially suitable for use in space-constrained urban construction, greatly improving the flexibility and efficiency of operations.
- The HR2150 is equipped with four independently controlled outriggers that can be extended or retracted individually or simultaneously. This makes the entire machine more stable, with stronger carrying capacity, ensuring safety and reliability under various working conditions.
- The HR2150 telehandler features an auto-leveling front axle and an actively floating rear axle, providing enhanced shock absorption. The rear axle also has an intelligent rigid lock function, which enhances the comfort of the cab and provides a smoother operating experience.



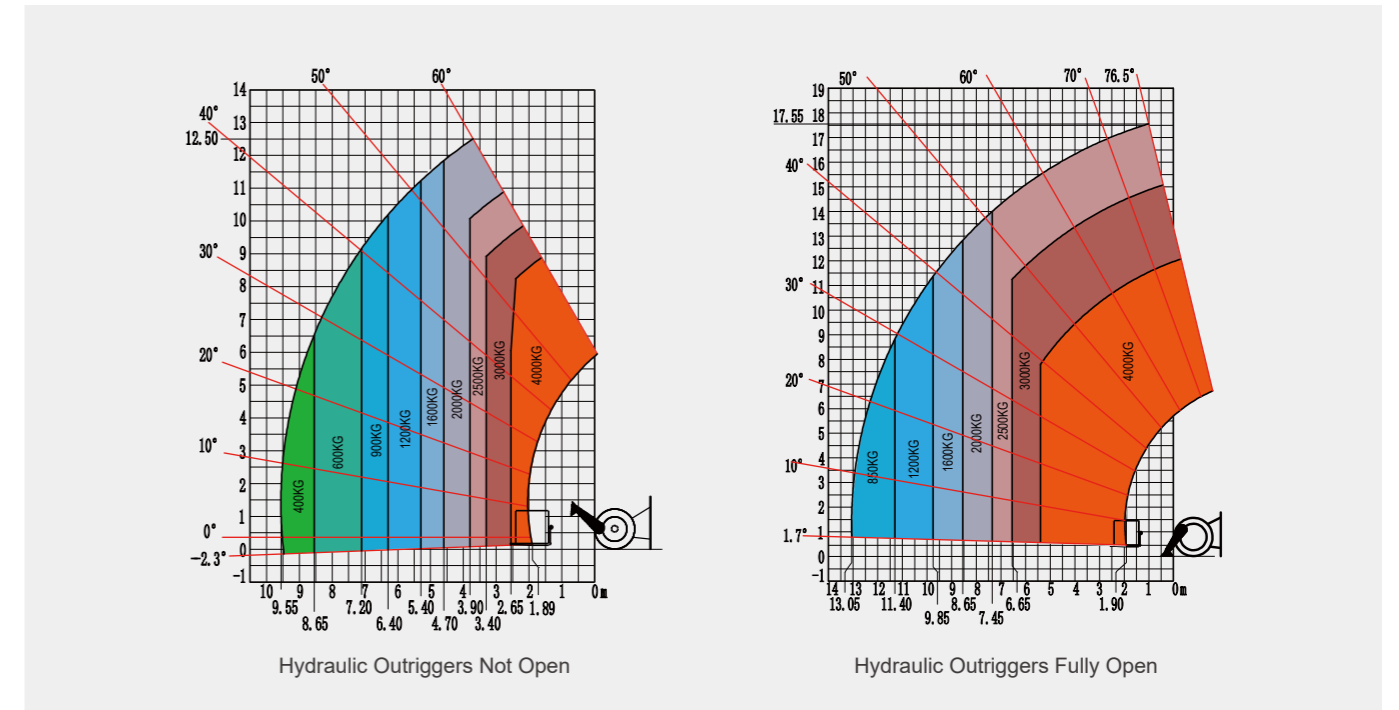
Load Charts

H625 / H735 / HA735

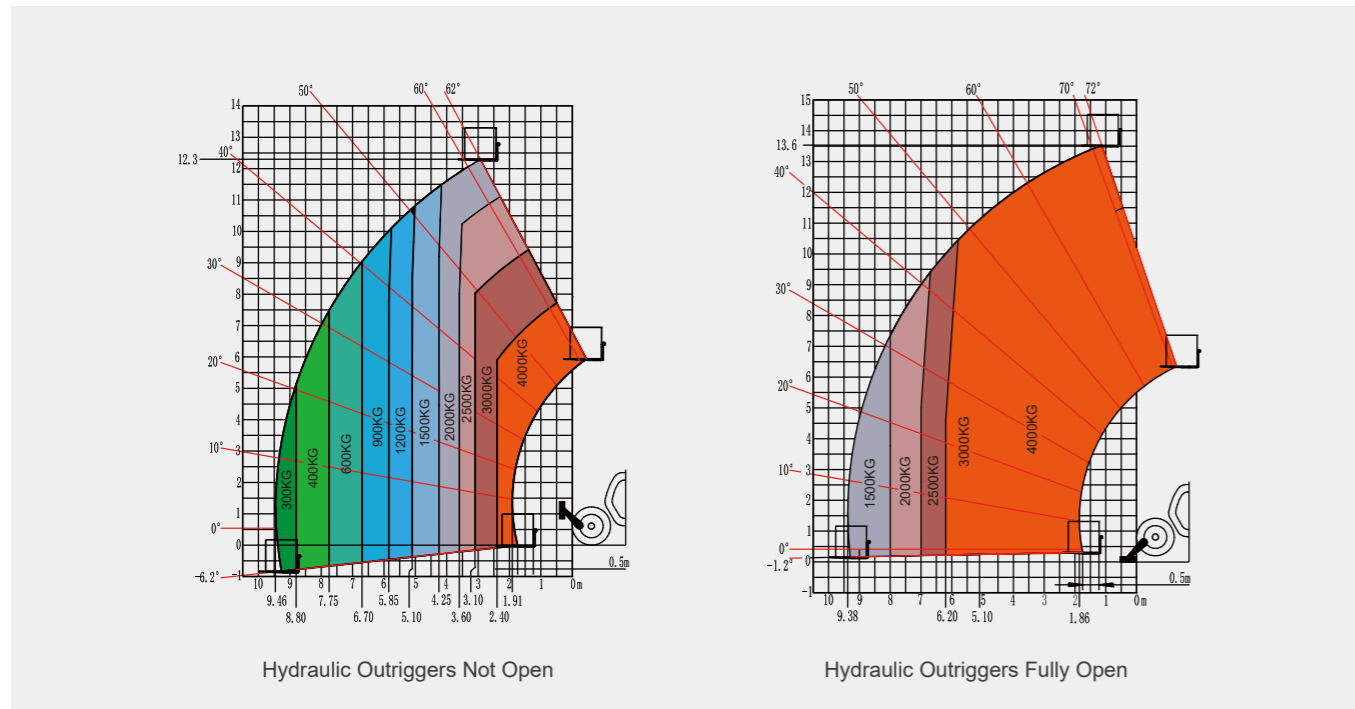


Load Charts

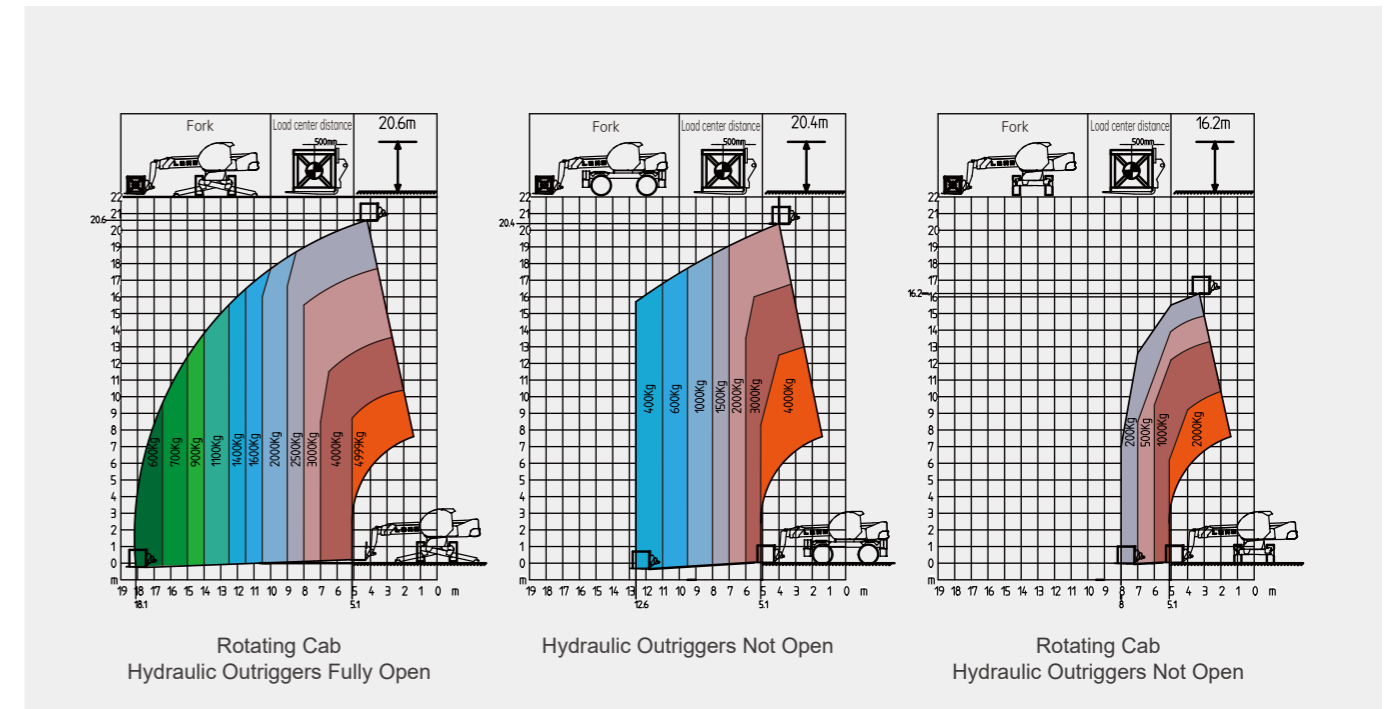
H1840



H1440



HR2150



Specifications

MODELS	H625		H735		HA735	
Performance	Metric	Imperial	Metric	Imperial	Metric	Imperial
Max. capacity	2500 kg	5512 lbs	3500 kg	7716 lbs	3500 kg	7716 lbs
Max. lifting height	5.94 m	19'6"	7 m	23'	6.9 m	22'8"
Max. outreach	3.41 m	11'2"	3.9 m	12'10"	3.9 m	12'10"
Breakout force with bucket	38 kN		64 kN		69 kN	
Gradeability-unladen	45%		45%		45%	
Tilt angle	±5°		±5°		±5°	
Machine weight	5050 kg	11133 lbs	7000 kg	15432 lbs	7300 kg	16094 lbs
Action speed						
Primary boom ascending time	9 s		7.51 s		7.4 s	
Primary boom descending time	6.5 s		5.57 s		5.4 s	
Boom extending time	6 s		6.93 s		7.6 s	
Boom retracting time	4 s		5.32 s		4.8 s	
Speed						
Forward - first gear travel speed	10 km/h	6.2 mph	9 km/h	5.6 mph	4.5 km/h	2.8 mph
Forward - second gear travel speed	24.9 km/h	15.5 mph	27 km/h	16.8 mph	9.5 km/h	5.9 mph
Forward - third gear travel speed	/		/		19 km/h	11.8 mph
Forward - fourth gear travel speed	/		/		27 km/h	16.8 mph
Backward - first gear travel speed	10 km/h	6.2 mph	9 km/h	5.6 mph	4.5 km/h	2.8 mph
Backward - second gear travel speed	24.9 km/h	15.5 mph	27 km/h	16.8 mph	9.5 km/h	5.9 mph
Backward - third gear travel speed	/		/		19.5 km/h	12.1 mph
Power						
Manufacturer	Kubota (Euro III engine) *		Kubota (Euro V engine) **		Yuchai (Euro III engine)	
Displacement	3331 ml	203 cu.in	3331 ml	203 cu.in	3621 ml	221 cu.in
Rated power	54.6 kW	73.2 hp	54.6 kW	73.2 hp	73 kW	97.9 hp
Max. torque	261.1 N.m	192.6 lb.ft	289.3 N.m	213.4 lb.ft	420 N.m	309.8 lb.ft
Max. traction force	39 kN		43 kN		80 kN	
Transfer case						
Transmission type	Hydrostatic		Hydrostatic		Torque converter power shift	
Parking brake	Electronic brake		Electronic brake, front axle parking brake			
Service brake	Multi-disc wet brake of front axle		Multi-disc wet brake of front and rear axles			
Hydraulic system						
Working pump type	Variable piston pump		Variable piston pump		Variable piston pump	
Working pump displacement	84 L/min	22.2 US gpm	112.5 L/min	29.7 US gpm	144 L/min	38 US gpm
Fuel tank volume						
Engine oil	9.5 L	2.5 gal	9.5 L	2.5 gal	9.5 L	2.5 gal
Hydraulic oil	75 L	19.8 gal	100 L	26.4 gal	100 L	26.4 gal
Fuel tank	63 L	16.6 gal	100 L	26.4 gal	130 L	34.3 gal
Noise and vibration						
Cab noise	74.5 dB		79 dB		81 dB	
Ambient noise	100 dB		104 dB		104 dB	
Vibration on hand/arms	< 2.5 m/s ²		< 2.5 m/s ²		< 2.5 m/s ²	

* Euro V engine optional

** Euro III engine optional

Specifications

MODELS	H1440		H1840	
Performance	Metric	Imperial	Metric	Imperial
Max. capacity	4000 kg	8818 lbs	4000 kg	8818 lbs
Max. lifting height	13.6 m	44'7"	17.6 m	57'9"
Max. outreach	9.22 m	30'3"	13.1 m	43'
Breakout force with bucket	87 kN		87 kN	
Gradeability-unladen	65%		65%	
Tilt angle	±9°		±9°	
Machine weight	12050 kg	26566 lbs	12350 kg	27227 lbs
Action speed				
Primary boom ascending time	14 s		14 s	
Primary boom descending time	16 s		16 s	
Boom extending time	22 s		22 s	
Boom retracting time	15 s		15 s	
Speed				
Forward - first gear travel speed	5 km/h	3.1 mph	5 km/h	3.1 mph
Forward - second gear travel speed	12 km/h	7.5 mph	12 km/h	7.5 mph
Forward - third gear travel speed	20 km/h	12.4 mph	20 km/h	12.4 mph
Forward - fourth gear travel speed	30 km/h	18.6 mph	30 km/h	18.6 mph
Backward - first gear travel speed	5 km/h	3.1 mph	5 km/h	3.1 mph
Backward - second gear travel speed	12 km/h	7.5 mph	12 km/h	7.5 mph
Backward - third gear travel speed	20 km/h	12.4 mph	20 km/h	12.4 mph
Power				
Manufacturer	Perkins (Euro III engine)		Perkins (Euro III engine)	
Displacement	4400 ml	269 cu.in	4400 ml	269 cu.in
Rated power	74.5 kW	99.9 hp	74.5 kW	99.9 hp
Max. torque	420 N.m	310 lb.ft	420 N.m	310 lb.ft
Max. traction force	93 kN		93 kN	
Power				
Manufacturer	Perkins (Euro V engine)		Perkins (Euro V engine)	
Displacement	3620 ml	221 cu.in	3620 ml	221 cu.in
Rated power	55.4/74.4 kW	74.5/99.8 hp	55.4/74.4 kW	74.3/99.8 hp
Max. torque	424/430 N.m	313/317 lb.ft	424/430 N.m	313/317 lb.ft
Max. traction force	93 kN		93 kN	
Transfer case				
Transmission type	Torque converter power shift		Torque converter power shift	
Parking brake	Electronic brake, front axle parking brake		Electronic brake, front axle parking brake	
Service brake	Multi-disc wet brake of front axle		Multi-disc wet brake of front axle	
Hydraulic system				
Working pump type	Variable piston pump		Variable piston pump	
Working pump displacement	138.6 L/min	36.6 US gpm	138.6 L/min	36.6 US gpm
Fuel tank volume				
Engine oil	9.5 L	2.5 gal	9.5 L	2.5 gal
Hydraulic oil	180 L	47.6 gal	180 L	47.6 gal
Fuel tank	150 L	39.6 gal	150 L	39.6 gal
Noise and vibration				
Cab noise	76 dB		76 dB	
Ambient noise	105 dB		105 dB	
Vibration on hand/arms	< 2.5 m/s ²		< 2.5 m/s ²	

Specifications

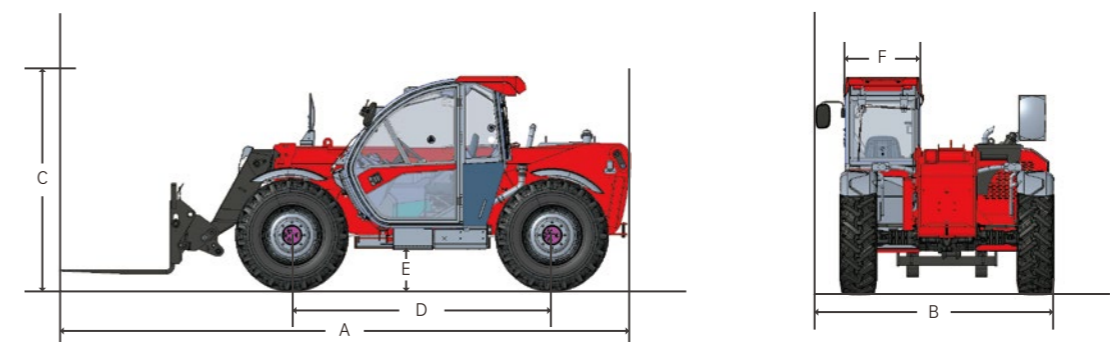
MODELS	H1840		HR2150	
	Metric	Imperial	Metric	Imperial
Performance				
Max. capacity	4000 kg	8818 lbs	4999 kg	11021 lbs
Max. lifting height	17.6 m	57'9"	20.7 m	67'11"
Max. outreach	13.1 m	43'	18.1 m	59'5"
Breakout force with bucket	87 kN		107 kN	
Gradeability-unladen	65%		65%	
Tilt angle	±9°		±9°	
Machine weight	12200 kg	26896 lbs	17100 kg	37699 lbs
Action speed				
Primary boom ascending time	14 s		27 s	
Primary boom descending time	16 s		22 s	
Boom extending time	22 s		32 s	
Boom retracting time	15 s		23 s	
Speed				
Forward - first gear travel speed	10 km/h	6.2 mph	5 km/h	3.1 mph
Forward - second gear travel speed	30 km/h	18.6 mph	30 km/h	18.6 mph
Forward - third gear travel speed	/	/	/	/
Forward - fourth gear travel speed	/	/	/	/
Backward - first gear travel speed	10 km/h	6.2 mph	5 km/h	3.1 mph
Backward - second gear travel speed	30 km/h	18.6 mph	30 km/h	18.6 mph
Backward - third gear travel speed	/	/	/	/
Power				
Manufacturer	Perkins (Euro III engine)		Perkins (Euro III engine)	
Displacement	4400 ml	268.5 cu.in	4400 ml	268.5 cu.in
Rated power	74.5 kW	99.9 hp	106 kW	142.1 hp
Max. torque	420 N.m	309.8 lb.ft	558 N.m	411.6 lb.ft
Max. traction force	93 kN		96 kN	
Transfer case				
Transmission type	Hydrostatic		Hydrostatic	
Parking brake	Electronic brake		Mechanical brake, rear axle parking brake	
Service brake	Multi-disc wet brake of front axle		Multi-disc wet brake of front and rear axles	
Hydraulic system				
Working pump type	Open pump		Variable piston pump	
Working pump displacement	163.8 L/min	43.3 US gpm	132 L/min	34.9 US gpm
Fuel tank volume				
Engine oil	9.5 L	2.5 gal	9.5 L	2.5 gal
Hydraulic oil	180 L	47.6 gal	260 L	68.7 gal
Fuel tank	150 L	39.6 gal	170 L	44.9 gal
Noise and vibration				
Cab noise	76 dB		76 dB	
Ambient noise	105 dB		108 dB	
Vibration on hand/arms	< 2.5 m/s ²		< 2.5 m/s ²	

Specifications

MODELS	Measurements	H625		H735	
		Metric	Imperial	Metric	Imperial
Overall length	A	3.99 m	13'1"	4.99 m	16'4"
Overall width	B	1.86 m	6'1"	2.33 m	7'8"
Overall height	C	1.97 m	6'6"	2.34 m	7'8"
Wheelbase	D	2.3 m	7'7"	2.85 m	9'4"
Ground clearance	E	0.32 m	1'1"	0.45 m	1'6"
Cab width	F	0.81 m	2'8"	0.85 m	2'9"
Tilt-up angle		12°		12°	
Tilt-down angle		117°		114°	
Min. turning radius		3.36 m	11'	3.9 m	12'10"
Fork size		1250x120x40 mm	49"x5"x2"	1250x120x45 mm	49"x5"x2"
Tire size		12-16.5 12PR		400/80 R24	

MODELS	Measurements	HA735		H1440	
		Metric	Imperial	Metric	Imperial
Overall length	A	4.91 m	16'1"	5.62 m	18'5"
Overall width	B	2.41 m	7'11"	2.44 m	8'
Overall height	C	2.31 m	7'7"	2.67 m	8'9"
Wheelbase	D	2.9 m	9'6"	3.07 m	10'1"
Ground clearance	E	0.41 m	1'4"	0.41 m	1'4"
Cab width	F	0.85 m	2'9"	0.98 m	3'3"
Tilt-up angle		13°		12.5°	
Tilt-down angle		134°		112°	
Min. turning radius		4.1 m	13'5"	4.3 m	14'1"
Fork size		1250x120x45 mm	49"x5"x2"	1200x125x50 mm	47"x5"x2"
Tire size		460/70 R24		440/80 R24	

MODELS	Measurements	H1840		HR2150	
		Metric	Imperial	Metric	Imperial
Overall length	A	5.9 m	19'4"	6.86 m	22'6"
Overall width	B	2.44 m	8'	2.46 m	8'1"
Overall height	C	2.67 m	8'9"	3.15 m	10'4"
Wheelbase	D	3.07 m	10'1"	2.75 m	9'
Ground clearance	E	0.41 m	1'4"	0.39 m	1'3"
Cab width	F	0.98 m	3'3"	1 m	3'3"
Tilt-up angle		12.5°		10°	
Tilt-down angle		112°		106°	
Min. turning radius		4.3 m	14'1"	3.65 m	12'
Fork size		1200x125x50 mm	47"x5"x2"	1200x125x60 mm	47"x5"x2"
Tire size		440/80 R24		445/70 R22.5	



Features

● Standard ○ Optional — No such configuration

PRODUCT MODEL	H625	H735	HA735	H1440	H1840	HR2150
Cab						
Front wiper	●	●	●	●	●	●
Rear wiper	●	●	●	●	●	●
Side wiper	●	●	●	●	●	●
Top wiper	—	○	●	●	●	●
Boom module						
Floating forks	●	●	○	●	●	●
Fixed forks	○	○	●	○	○	○
Construction bucket (1 cubic meter)	○	○	○	○	○	○
Agricultural bucket (2 cubic meter)	—	—	○	—	—	—
Agricultural bucket (2.5 cubic meter)	—	—	○	—	—	—
Agricultural bucket (3 cubic meter)	—	—	○	—	—	—
Frame mounted hook	○	○	○	○	○	○
Rotating forks	—	○	—	○	○	○
Wrapped bale clamp	○	○	○	—	—	—
Three-needle fork	○	○	○	—	—	—
Square bale forks	○	○	○	—	—	—
Extension work platform	—	—	—	—	○	○
Glass suction cup	—	—	—	—	—	○
Fixed adjustable fork assy	—	○	—	○	○	○
Single arm and dual hook assy	○	○	○	○	○	—
Air conditioning system						
Refrigeration and heating	●	●	●	●	●	●
External circulation fresh air system	—	—	—	●	●	●
Two-level air speed	●	●	●	—	—	—
Three-level air speed	—	—	—	—	—	●
Four-level air speed	—	—	—	●	●	—
Electrical system						
Function mode selection	●	●	●	●	●	●
Man-machine interactive operation keyboard	●	●	●	●	●	●
Instrument	●	●	●	●	●	●
Emergency stop switch	●	●	●	●	●	●
Front and rear axle wheel alignment detection	●	●	●	●	●	●
Combined joystick	—	—	—	—	—	●
Mileage display	●	●	●	●	●	●
Vehicle level inspection	●	●	●	●	●	●
Driving brake detection	●	●	●	●	●	●
Safety belt detection	●	●	●	●	●	●
Driver departure alarm detection	●	●	●	●	●	●
Door opening detection	●	●	●	●	●	●
Front and rear combined headlights	●	●	●	●	●	●
Rear lighting	●	●	●	●	●	●
Hazard alarm buzzer prompt	●	●	●	●	●	●
Alarm light	●	●	●	●	●	●
Boom angle detection	●	●	—	●	●	●
Body level tilt sensor detection	—	—	—	●	—	●
In-place detection of outriggers	—	—	—	●	●	●
Extension and retraction pressure detection of outriggers	—	—	—	●	●	●

Features

● Standard ○ Optional — No such configuration

PRODUCT MODEL	H625	H735	HA735	H1440	H1840	HR2150
Electrical system						
Job warning horn	●	●	●	●	●	●
Elevating platform control	—	—	—	—	—	○
Elevating platform weighing	—	—	—	—	—	●
Amplitude limitation	●	●	●	●	●	●
Wireless remote control	—	—	—	—	—	●
Platform lighting	○	○	○	○	○	—
Weighing detection control	●	●	●	●	●	●
Reverse dust removal	—	—	●	—	—	—
Reversing camera	○	○	○	○	○	○
Positioning system - Trackunit (reserved interface)	○	—	—	—	—	—
Bluetooth radio	●	●	●	●	●	●
Cold start						
Engine prewarming	●	●	●	●	●	●
Cold weather package	○	○	○	○	○	—
Transmission module						
Carraro transfer case	●	●	—	—	●	●
Carraro gearbox	—	—	●	●	●	—
Travel module						
Four-wheel drive	●	●	●	●	●	●
Front axle - Carraro	●	●	●	●	●	●
Rear axle - Carraro	●	●	●	●	●	●
Air filled tire	●	●	●	●	●	●
Hydraulic module						
Open load sensitive system	●	●	●	●	●	●

Top Service

LGMG provides comprehensive pre-sale, sale and after-sale attentive service. Integrate precise service into any link closely related to each customer, and provide technical support, training programs, warranty and parts sales to customers during the whole machine life-cycle.

Technical Support

LGMG service teams always provide remote technical support by phone or email and even on-site support with manuals, tools, information and service solutions.

Training Support

LGMG provides various training programs for operators and service technicians, helping rental companies to improve their service and training capabilities via dedicated courses prepared by LGMG teams either online or on-site.

Parts Support

LGMG provides sufficient stock of parts in LGMG's global service centers. Accurate parts manuals and technical support teams are always available to answer your questions.

